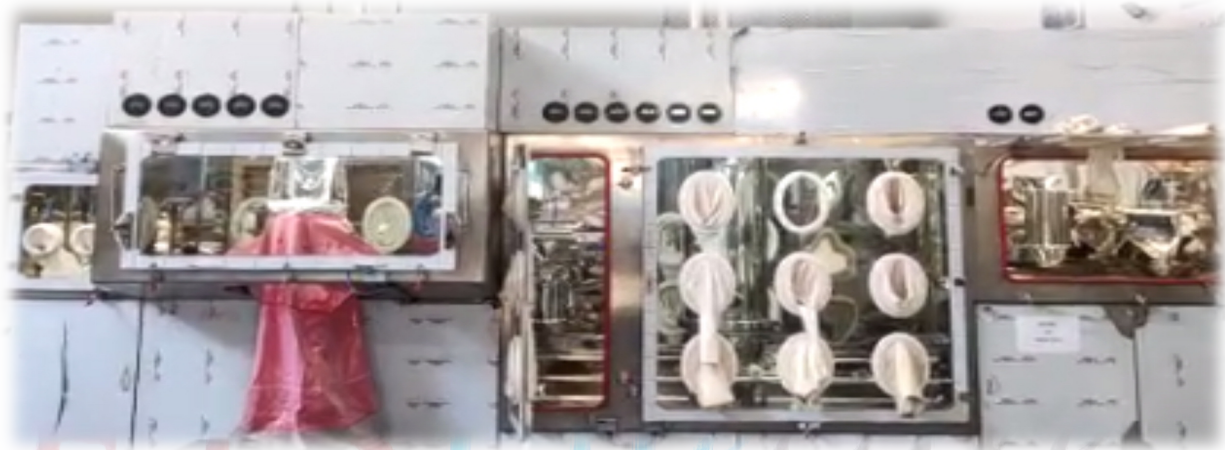


# FTSLifecare

## Granulator Machine *(pharmaceutical applications)*

**Granulator Machine** is the best technology optimally designed and manufactured by FTS Lifecare to meet the growing needs of GMP-compliant processing of any kinds of pharmaceutical granules in a safe closed chamber.



This Granulator machine is a one smart unit for all operations and comprises of different sections including sifting, wet high shear mixing and granulating, co-milling, drying and blending of small batches of up to 10 kg batch size.

This machine is suitable for mixing different powder material and granulate wet granules in one procedure. The principle of action is based on:

- 1) Feed the powder material into the bin container of granulator.
- 2) Dry mix by the rotor stirring oar
- 3) Add binder make wet material
- 4) Break the wet material to wet granules by cutter. This unit has mixing bowl, mixing blades (Anchor), granulator (chopper), pneumatic discharge, Anchor & chopper motor, gear box, operating panel and the control panel.
- 5) Co-mill is a self-contained fixed containment compatible unit useful for high speed granulating, and chopping, etc., of a wide range of wet and dry materials without special attachments.
- 5) Drying of granules in column dryer in its chamber
- 6) Blending in the small scale blender unit in its chamber Bin blenders or container tumblers are used mainly for blending of dry powders for



tablet production and capsule, which facilitates better flow for tablets and capsules.

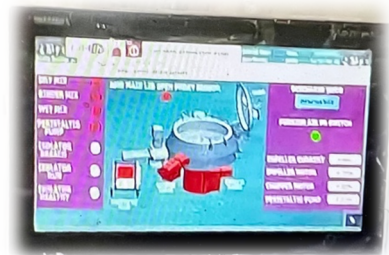
**The main technical characteristics.**

No	Item	Unit	Model/specification
1	Volume of Containers	Liter	25 L and 15 L
2	Capacity	Kg/batch	10 kg and 5 kg
3	Mixing speed	r,p,m	5-155
4	Mixing power	kw	22
5	Cutting speed	r,p,m	2880
6	Cutting power	kw	7.5
7	Pressure of compressed air	MPa	04-0.6
8	Consumption of compressed air	m <sup>3</sup> /min	06
9	Mesh	Mesh	20-80
10	PLC	SIEMENS	S71200
11	Power Rating	3 phase 380 V 50 Hz	
12	Machine Noise Level	dB	Less than 70
10	Gross Size of machine	mm	5460 x 900 x 2400
11	Net Weight	Kgs	6016

**Common operating panel is made of SS 304 & mounted on Machine**

Following functions are controlled through HMI.

- Bag Seal/Unseal
- Seal Product Container
- Inlet Air Temperature-Set & Actual
- Product Bed Temperature-Set & Actuals.
- Exhaust Air Temperature-Set & Actual.
- Auto Bag Shaking On/Off
- Inlet Air Damper On/Off
- Exhaust Air Damper On/Off
- Blower On/Off
- Heater On/Off
- Coating Pump On/Off
- Different Safety Alarms & Interlock.



\*\*\*\*\*